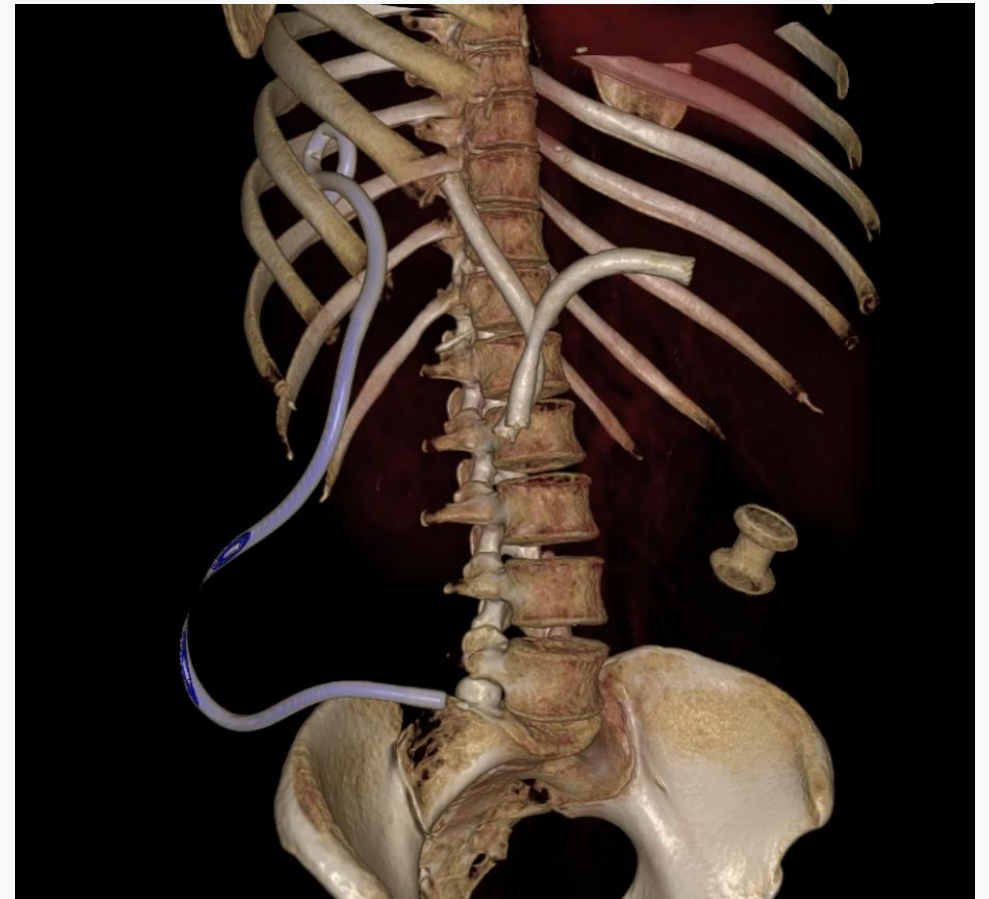


Non-vascular Abdominal Interventions:

What Can Go Wrong?



Key Questions After a Percutaneous Intervention

- 1. Did I achieve the intended goal?
- 2. Will it function as planned?
- 3. Are there any complications?

- **Common Non-Vascular Interventions**

Diagnostic/therapeutic aspirations

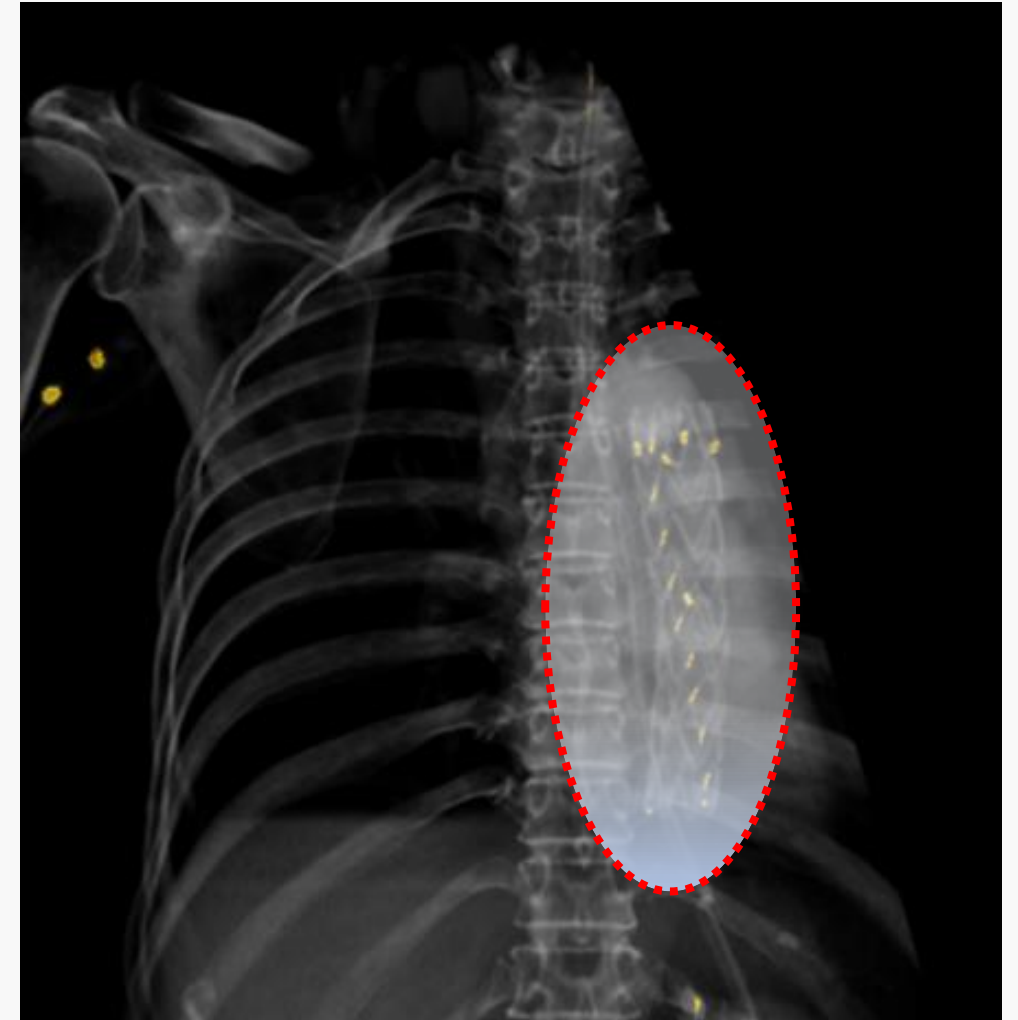
Percutaneous abscess drainage

Nephrostomy

PTBD (Percutaneous Transhepatic Biliary Drainage)

(Thoracic duct embolization – not common)

- 1. Did we achieve the intended goal? **NO**
- 2. Will it function as planned? **NO**
- 3. Are there any complications? **YES**

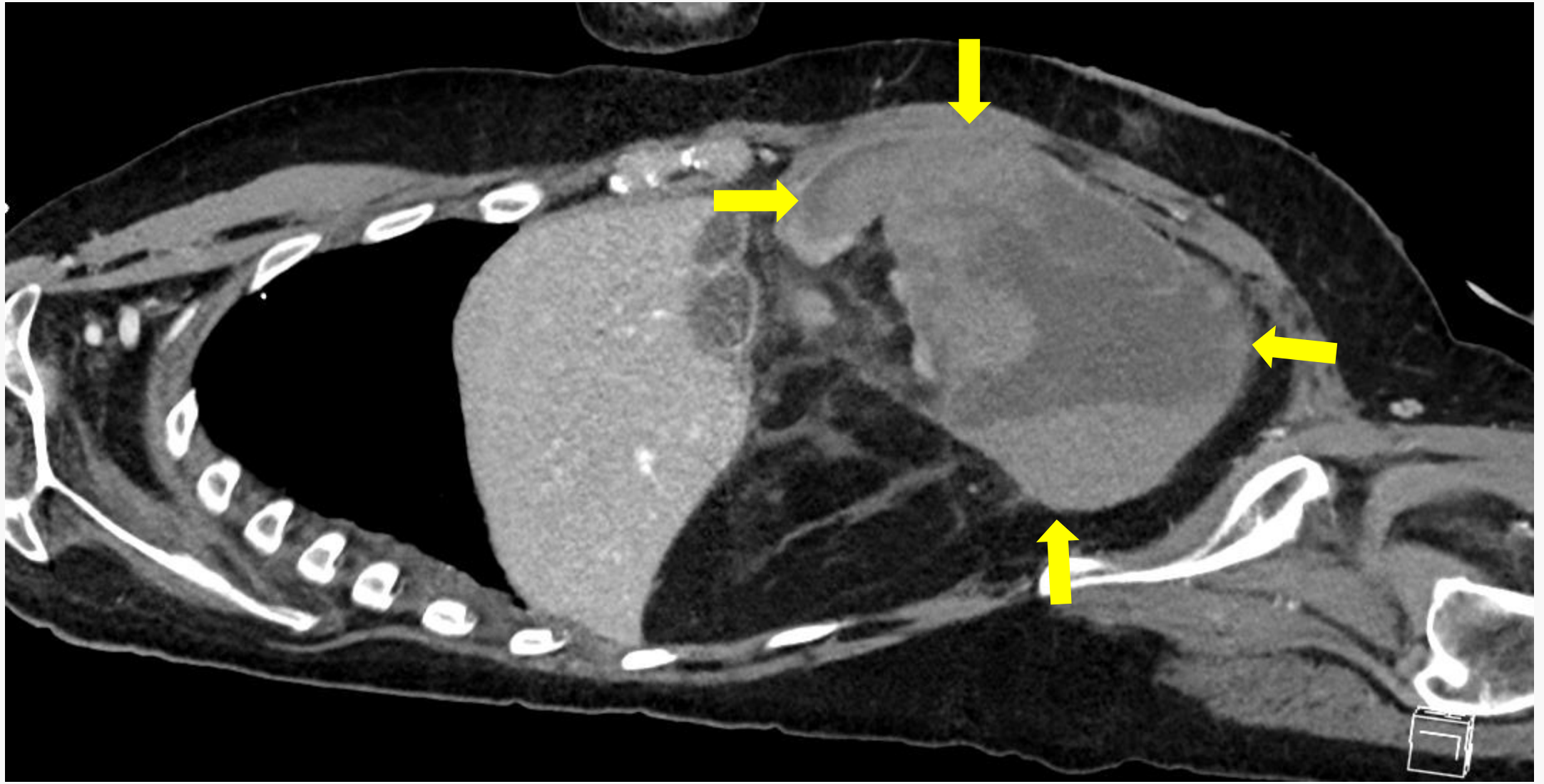


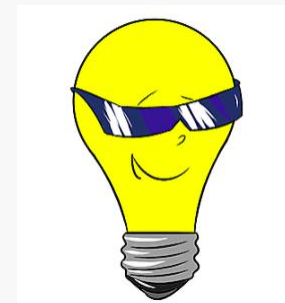
- **Common Non-Vascular Interventions**

Diagnostic/therapeutic aspirations

Percutaneous abscess drainage

Bleeding complication





Indication is Key

- Balance risk vs. benefit
- Justified by a clear and valid clinical indication

Key Question

- Do the patient need a Drainage Bag ?



25 vs 2000 ml



Complications of Nephrostomy

- **Hemorrhage:** Post-procedural bleeding
- **Catheter traversing colon**
- **Malpositioned catheter**

Tip outside the collecting system



Complications of Nephrostomy

- Hemorrhage: Post-procedural bleeding
- Catheter traversing colon
- Malpositioned catheter
- **Critical misplacement:**
 - Catheter inadvertently advanced into superior vena cava
 - Pericardial involvement observed – risk of tamponade

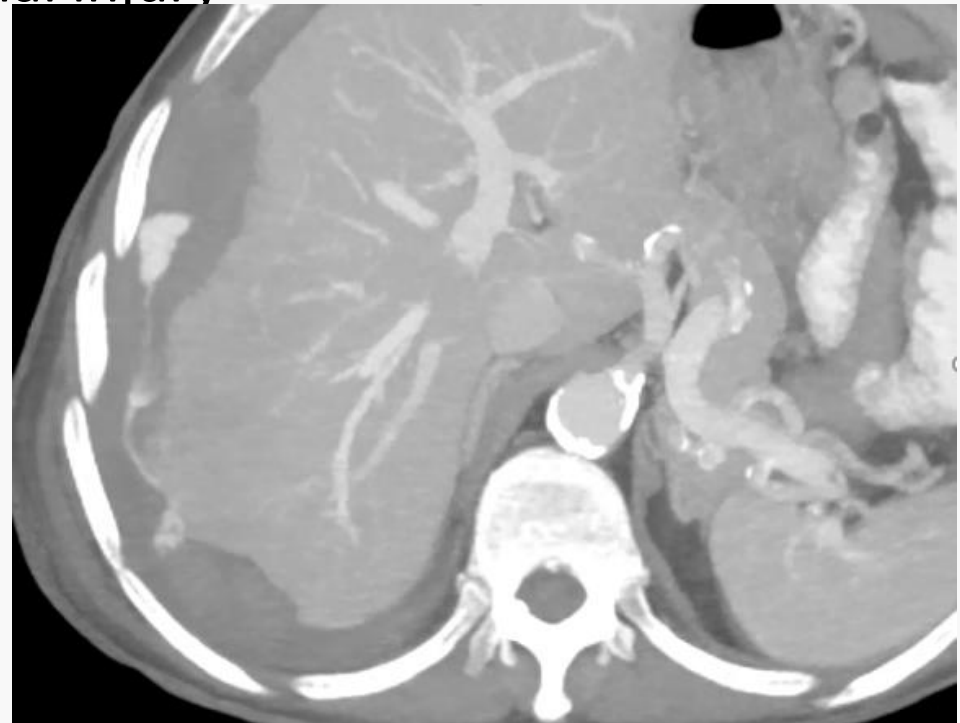


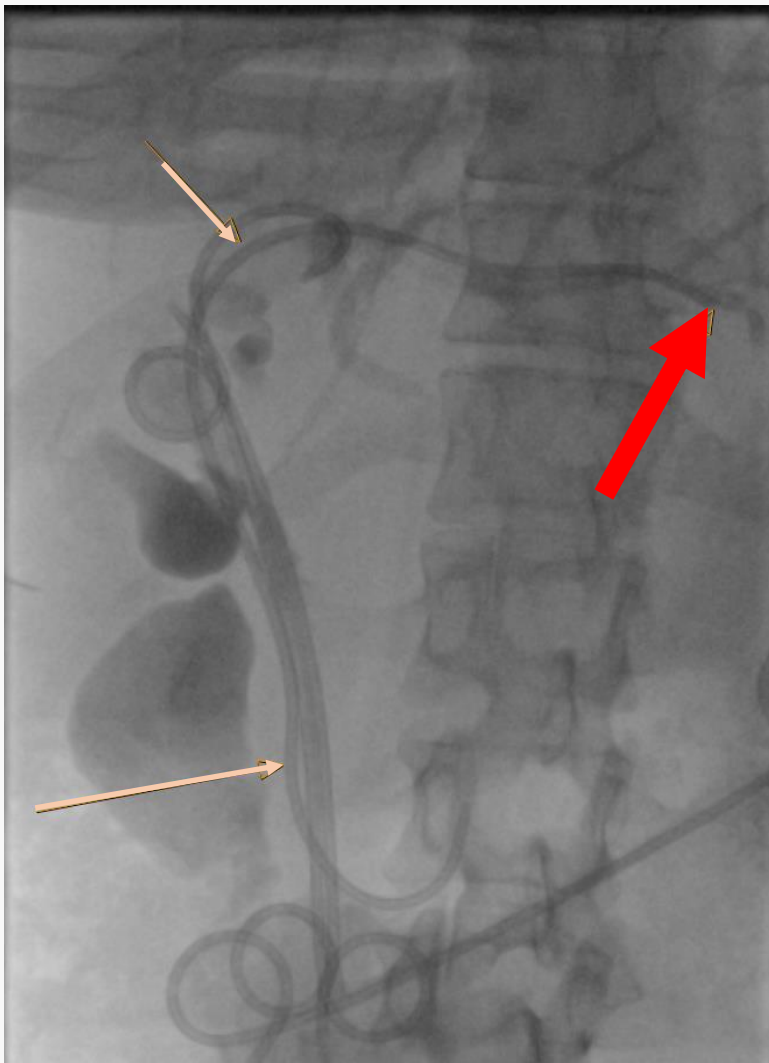
- Liver Bleeding - Percutaneous Transhepatic Biliary Drainage - PTBD

Vascular injury, most serious hepatic arterial injury

Endovascular coil embolization needed

**Phrenica
artery**





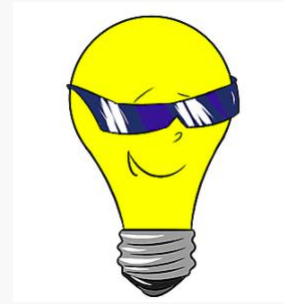
Stent displacement



Bile leakage !!!



Obstructed stents? -> Cholangitis

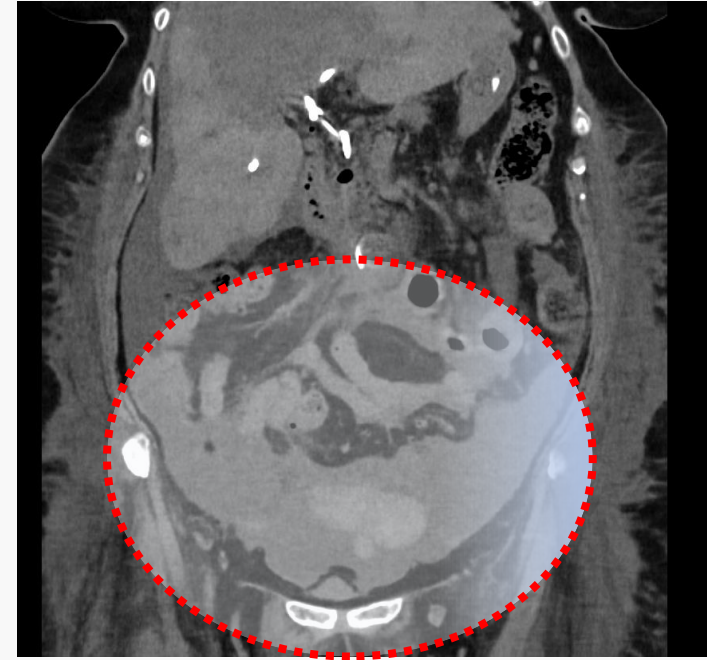
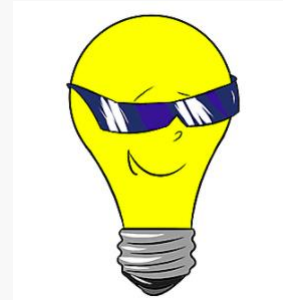


Take Home Message

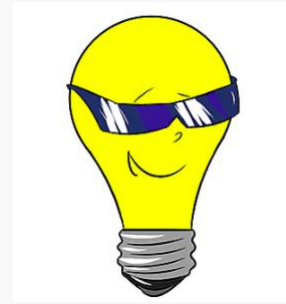
- Non-vascular abdominal interventions carry real risks
- **Malpositioned catheters or stents**
 - Must be recognized and reported
 - Evaluate both position and function
 - Don't assume they're working just because they're present

Take Home Message

- Peritoneal fluid post PTBD?
 - **Always suspect Bile leakage**
 - **Report findings clearly on CT !**

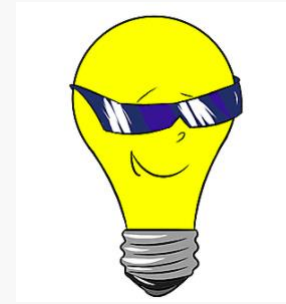


Take Home Message

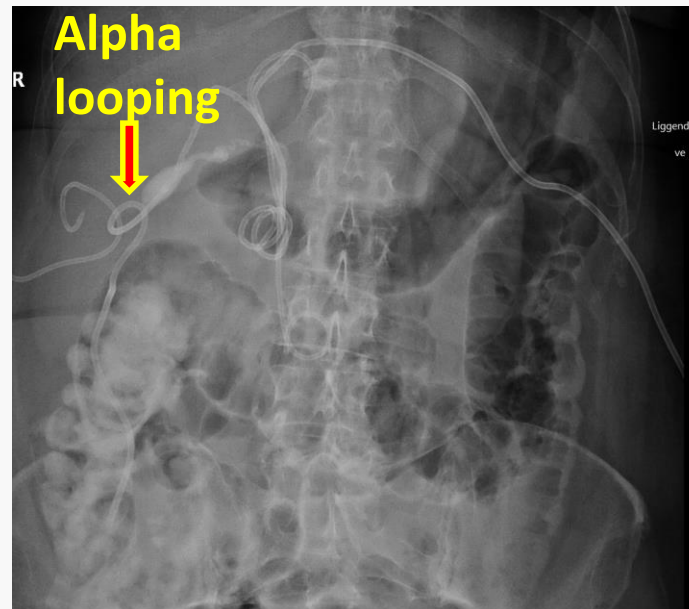


- Peritoneal fluid post PTBD?
 - Always suspect Bile leakage
 - Report findings clearly on CT !
- Thoracic duct embolization:
 - Remember TDE as a valuable therapeutic option
 - especially after esophageal surgery / chylothorax

Take Home Message



- Identify subtle signs of complications
 - Gas in the biliary tree can indicate serious pathology
 - Alpha looping drains



Talk to the patient

- Before the procedure
- During the procedure
- After the procedure

o.e.heieren@gmail.com